

About the Rapid Bracket® Void Detector Holder

The Patented Rapid Bracket® is a proudly Australian Made Void Detector Holder. It allows the easy installation and future maintenance of detectors in inaccessible or hard to reach ceiling spaces from 550mm to 3000mm in height. Using the Rapid Bracket® avoids the need for access hatches, leaving a sleek aesthetically pleasing finish.

Constructed from ultra-high heat resistant engineering polymers and ultra-light weight anodized aluminium, the Rapid bracket® weighs just 1.25kg in its tallest form. Its 128mm opening means it can be used with a larger variety of detectors. The clever clamping design allows it to be used in ceiling thicknesses ranging from 8mm to 32mm, and gives it the additional ability to be back blocked for some of those lighter duty ceilings or ceiling tiles. Designed for rapid installation straight from the box.

Safety



Always wear appropriate personal protective equipment when installing or servicing this device. Beware of hazards like electrical cables or other services when using this product. This product must be installed & serviced by competent persons. The Rapid Bracket must be installed in conjunction with the *Product Installation Specifications*

3 Year Replacement Warranty

In order to make a claim under this warranty, return the product to your place of purchase.

Rapid Bracket Pty Ltd reserves the right to change the information contained in this document without notice. To ensure you have the most up to date information please contact support@rapidbracket.com. Rapid Bracket Pty Ltd is not liable for representations made by users, suppliers, or retailers about the product. Rapid Bracket Pty Ltd is not liable for any loss or damage resulting from incorrect, careless or negligent use or storage of the product. To the maximum extent permitted by law Rapid Bracket Pty Ltd disclaims all warranties in relation to manufacture and use of the product. Rapid Bracket Pty Ltd does not exclude rights and remedies that cannot be excluded by legislation. Any liability arising from use of the product is limited to the replacement or purchase price of the product.



INSTALLATION MANUAL

MODEL: RBVDHFR



CONTACT

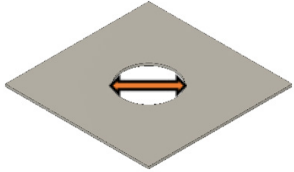
Rapid Bracket Pty Ltd
PO Box 7280
East Brisbane, QLD 4169

✉ Info@rapidbracket.com
🌐 www.rapidbracket.com



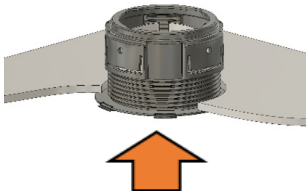
Rapid Bracket® Void Detector Holder - Installation Instructions

STEP 1



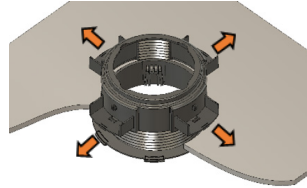
Cut a 165mm hole.

STEP 2



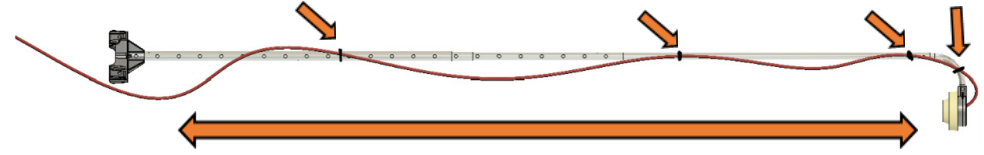
Insert the *Rapid Bracket®* into the ceiling.

STEP 3



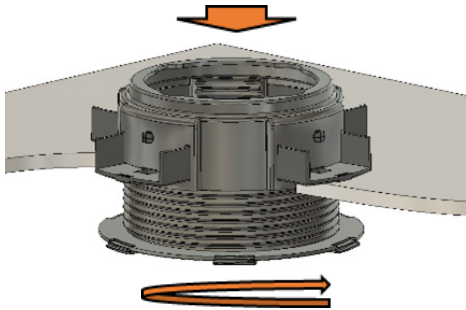
Push clips out until they **CLICK** into place.

STEP 7



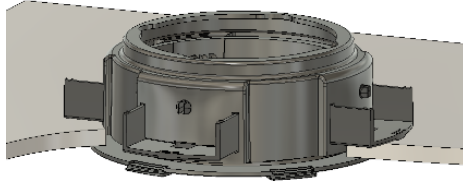
Extend Tubes to desired length. Then, cable tie your cables to the Tubes and fit off your Device.

STEP 4



Seat the bracket into the hole and tighten.

STEP 5



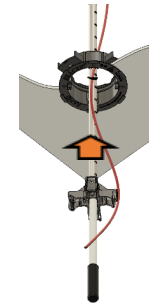
Complete.

STEP 8



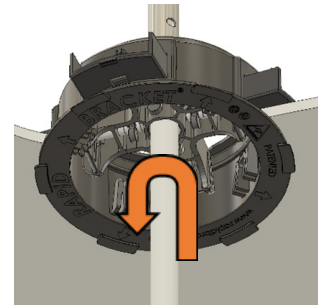
Use the Assistance Handle to assist with balance.

STEP 9



Insert through hole.

STEP 10



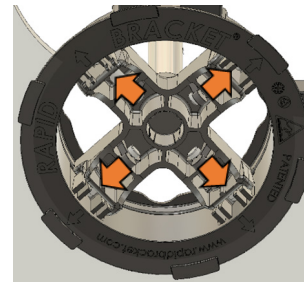
Push up, twist and sit down over wedges.

STEP 6



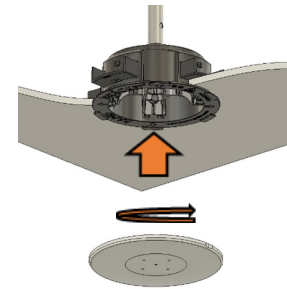
Insert Tubes into the Tube holder, the Bend Piece and Detector Holder.

STEP 11



Push out 4x locking pins.

STEP 12



Clip on lanyard and twist on faceplate.

